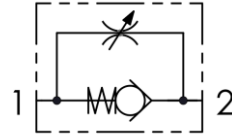


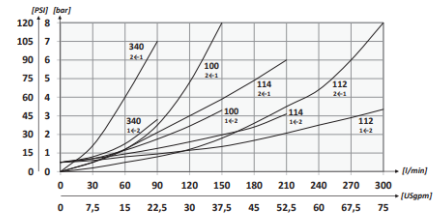
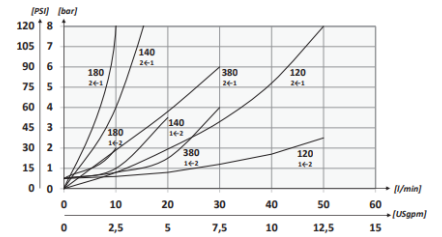
## Özellikleri – Features

Gövde Malzemesi – <b>Body Material</b>	Çelik / <b>Steel</b> DIN1.0715
Mineral Yağ – <b>Mineral Oil</b>	ISO 6743/4 ( DIN 51524 )
İç Kaçak – <b>Leakage</b>	0.025 mm <sup>3</sup> /min
Yağ Viskozitesi – <b>Oil Viscosity</b>	10-500 mm <sup>2</sup> /s ( 10-420 cSt)
Yağ Sıcaklığı – <b>Oil Temperature</b>	-20 C° - + 80 C°
Ortam Sıcaklığı – <b>Environment Temperature</b>	-20 C° - + 50 C°

## Şema / Circuit



## Basınç Kaybı / Pressure Drop Curves



## Teknik Özellikler / Technical Characteristics

Kod - Code	A	Max. Akış (l/min) Max. Flow (USgpm)	Max. Basınç (Bar) Max. Pressure (PSI)	B	D	E	F	Tahmini Ağırlık (kg) Approx. Weight (lb)
HAKV-14-1	BSPP 1/4	15 (4.0)	400 (5800)	66 (2.60)	30 (1.18)	76 (2.99)	25 (0.98)	0.33 (0.70)
HAKV-38-1	BSPP 3/8	30 (7.9)		77 (3.03)				0.39 (0.84)
HAKV-12-1	BSPP 1/2	50 (13.2)		91 (3.58)				0.62 (1.36)
HAKV-34-1	BSPP 3/4	80 (21.1)		112.5 (4.43)	40 (1.57)	110 (4.33)	40 (1.57)	1.41 (3.10)
HAKV-1-1	BSPP 1	150 (39.6)	350 (5075)	140 (5.51)		115 (4.52)	45 (1.77)	1.94 (4.27)

