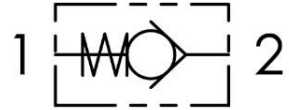


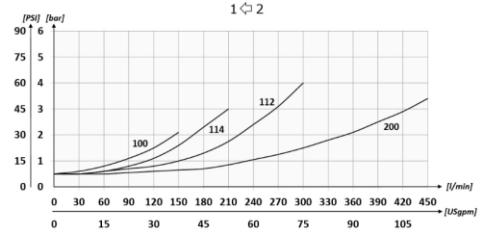
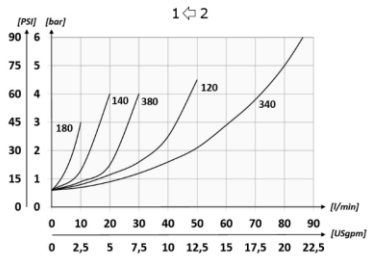
Özellikleri – Features

Gövde Malzemesi – Body Material	Çelik / Steel DIN1.0715
Mineral Yağ – Mineral Oil	ISO 6743/4 (DIN 51524)
İç Kaçak – Leakage	0.25 cm ³ /min
Yağ Viskozitesi – Oil Viscosity	10-500 mm ² /s (10-420 cSt)
Yağ Sıcaklığı – Oil Temperature	-20 C° - + 80 C°
Ortam Sıcaklığı – Environment Temperature	-20 C° - + 50 C°

Şema / Circuit



Basınç Kaybı / Pressure Drop Curves



Tip / Type

Ebat / Size

Diş Tipi / Thread Type

HCV

14 = 1/4"

38 = 3/8"

12 = 1/2"

34 = 3/4"

1 = 1"

Boş / **Null** = BSPP

* özel diş talepleri için iletişime geçin / **for special thread type please contact us**

Sipariş Kodu / Order Code

HCV

14

Teknik Özellikler / Technical Characteristics

Kod - Code	A	Max. Akış (l/min) Max. Flow (Usgam)	Max. Basınç (Bar) Max. Pressure (PSI)	Uzunluk - Length (mm / inches)	Ch.	Tahmini Ağırlık (kg) Approx. Weight (lb)
HCV-14	BSPP 1/4	15 (4.0)	400 (5800)	55 (2.17)	19	0.10 (0.22)
HCV-38	BSPP 3/8	30 (7.9)		65 (2.56)	24	0.18 (0.40)
HCV-12	BSPP 1/2	50 (13.2)		75 (2.95)	27	0.22 (0.50)
HCV-34	BSPP 3/4	90 (23.8)		86.5 (2.41)	35	0.46 (1)
HCV-1	BSPP 1	150 (39.6)	350 (5075)	110 (4.33)	41	0.72 (1.6)

