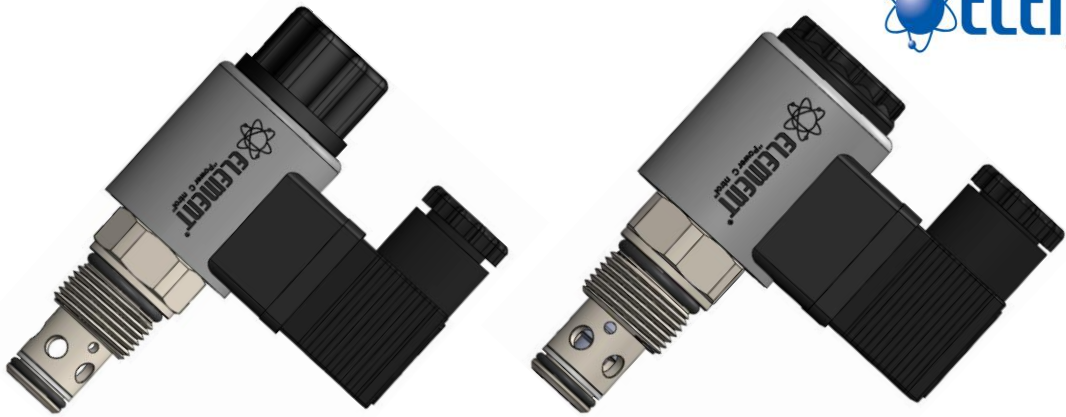


KPV Kartriç tipi selenoid popet valf - Cartridge type selenoid popet valves



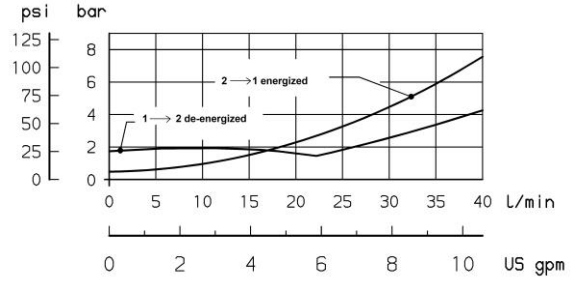
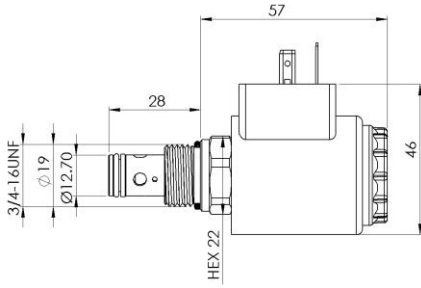
Teknik Özellikler / Technical Characteristics

Özellikler / Specification	Normalde Açık / Normally Open		Normalde Kapalı / Normally Close	
	8:2	10:2	8:2	10:2
Kartriç Tipi / Cartridge Type	Normalde Açık / Normally Open		Normalde Kapalı / Normally Close	
Kavite / Cavity	8:2	10:2	8:2	10:2
Çalışılan Sıvılar / Operating Fluid	Hidrolik yağ standartlarında DIN 51524 parça 1,2,3 Hydraulic oil DIN 51524 part 1,2,3			
Viskozite Aralığı / Viscosity range	Min. 7.4 mm ² /s to max 420 mm ² /s			
Çalışma Basıncı / Operating Pressure	Max 350 bar			
Nominal akış / Nominal Flow	Max.38l/min	Max. 75l/min	Max. 38l/min	Max. 75l/min
Ortam Çalışma sıcaklığı aralığı / Media Operating temperature range	-20 C / + 100 C			
Ortam sıcaklık aralığı / Ambient temperature range	-20 C / + 60 C			
Malzeme / Materials	Piston / Piston sertleştirilmiş ve taşlanmış çelik / hardened and ground steel			
	O-Ring/ Seals NBR (standart)			
	Valf Gövdesi / Valve body çelik / free-cutting steel			
	Bobin/ Coil Çelik – poliamid / steel polyamide			
Elektriksel Değerler / Electrical Data	Voltaj Tipi / Type Of Voltage 12 V DC – 24 V DC / 230 V AC			
	Voltaj Toleransı / Voltage Tolerance + - 15 % nominal değerde / of the nominal voltage			
	Akım çekişi 20 C / Current Draw at 20 C 1.5A at 12 V DC 0.8A at 24 V DC			
	Bobin Soket Tipleri/ Coil Connectors Types DIN 43650-A Geniş Tip 18 mm 2p+t DIN 43650 Geniş Tip Ledli 18 mm 2p+t			

Sipariş Kodu / Order Code	Kavite / Cavity	Vida Ölçüsü / Thread Type	Açıklama / Explanation
KPV – 8NO–24	8:2	3/4" 16 UNF	Normalde Açık / Normally Open – 24V - VDC
KPV – 10NO–24	10:2	7/8" 14 UNF	Normalde Açık / Normally Open – 24V - VDC
KPV – 8NC–24	8:2	3/4" 16 UNF	Normalde Kapalı / Normally Close – 24V - VDC
KPV – 10NC–24	10:2	7/8" 14 UNF	Normalde Kapalı / Normally Close – 24V - VDC

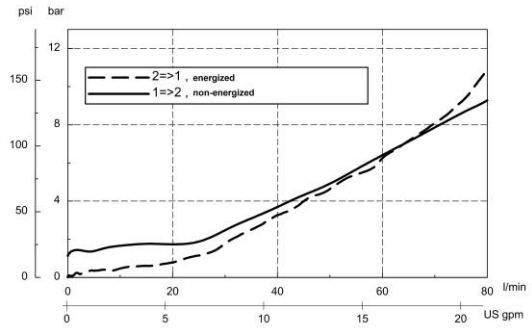
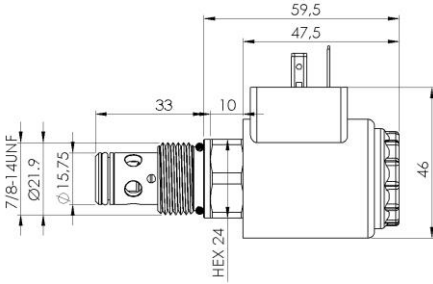
8:2 KAVİTE - CAVITY / NORMALDE KAPALI - NORMALLY CLOSE (NC)

Ölçüler / Dimensions



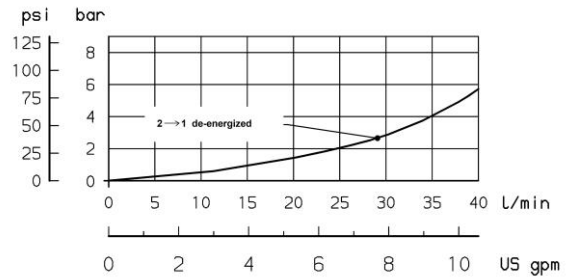
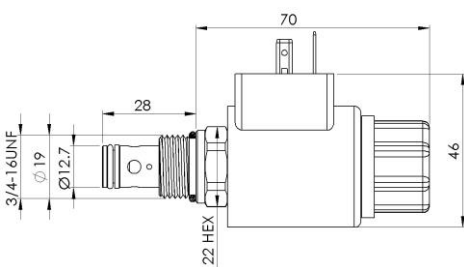
10:2 KAVİTE - CAVITY / NORMALDE KAPALI - NORMALLY CLOSE (NC)

Ölçüler / Dimensions



8:2 KAVİTE - CAVITY / NORMALDE AÇIK - NORMALLY OPEN (NO)

Ölçüler / Dimensions



10:2 KAVİTE - CAVITY / NORMALDE AÇIK - NORMALLY OPEN (NO)

Ölçüler / Dimensions

